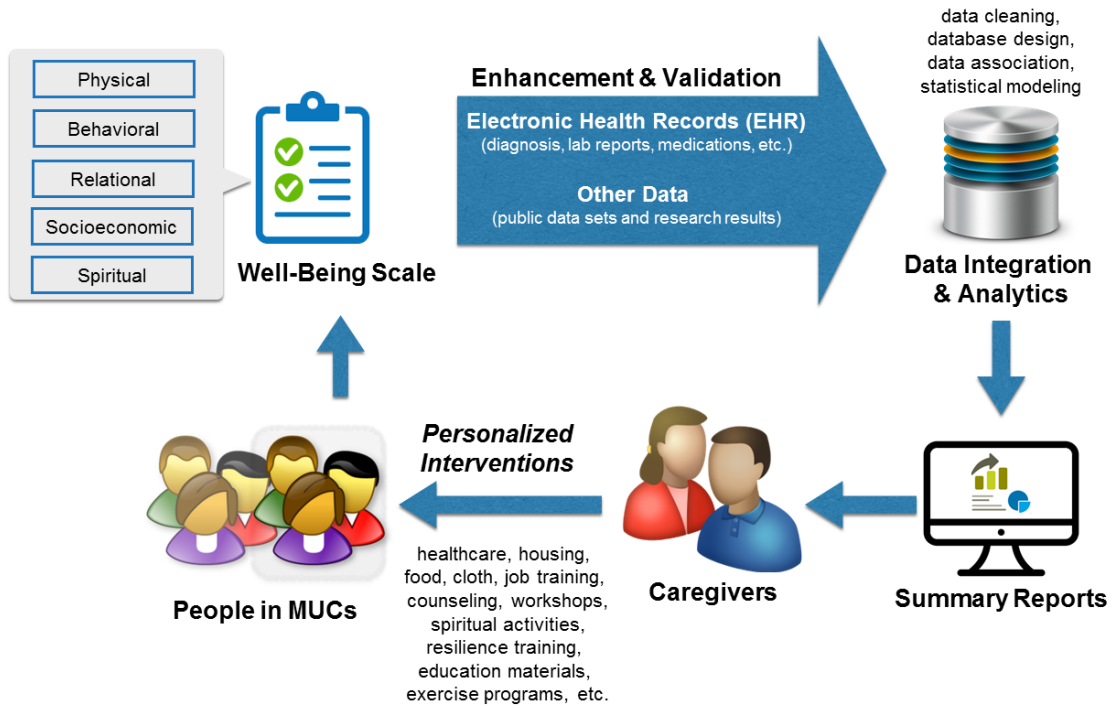


Figure 1

Architecture of the imHealthy System



Note: People in medically underserved communities (MUCs) answer the questions in the comprehensive well-being scale, and the answers are combined with the data in the EHR and other data sources if available. After the data are integrated and analyzed, a summary report will be generated and provided on a web portal. Caregivers will then design and deliver personalized interventions to the people in the MUCs.