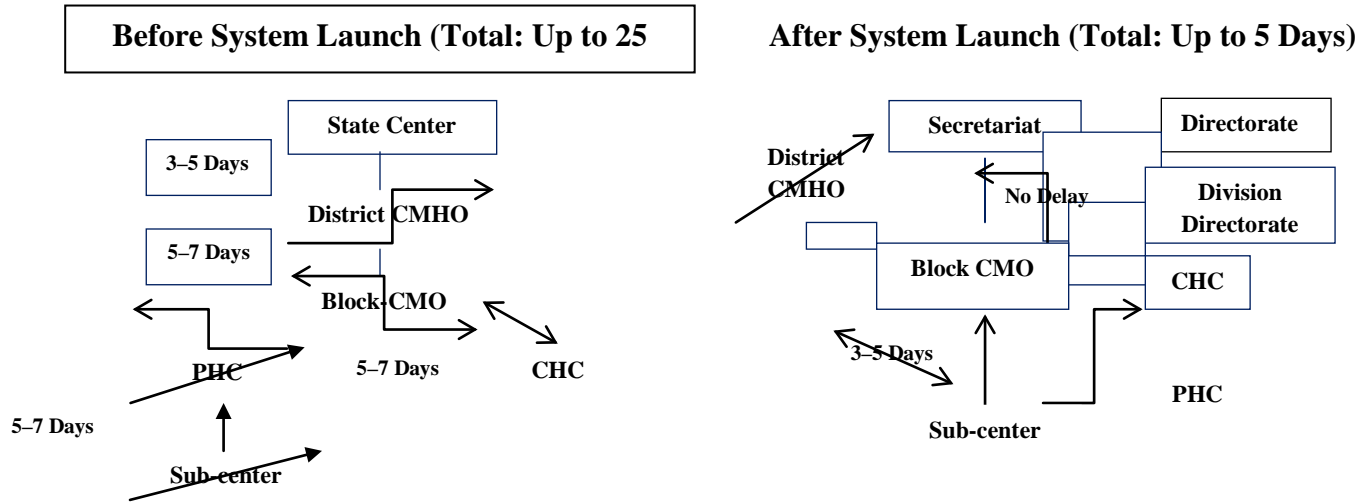


**Figure 1**

Comparison of Information Flow and Management Before and After Launch of the System



*Abbreviations:* CMHO/MHO, chief medical health officer; CMO, chief medical officer; PHC, primary health center; CHC, CHC, community health center.

*Note:* The single-sided straight arrows represent information flow in an upward direction. The double-sided arrow shows data flow in both directions and between both levels.

*Source:* Gupta, I., and C. Sen. "Pregnancy, Child Tracking and Health Services Management System." *Informatics* 19, no. 2 (2010): 18. Available at

[http://informatics.nic.in/uploads/pdfs/6e8363a7\\_October\\_2010.pdf](http://informatics.nic.in/uploads/pdfs/6e8363a7_October_2010.pdf).